



CREATE WITH MIND AND SERVE WITH



ZEHUA PRODUCT MANUAL

HENAN ZEHUA HEAVY MACHINERY CO., LTD



CREATE WITH MIND AND SERVE WITH HEART

Zehua Heavy Industry-Engineering Excellence, Lifting the Future

E-MAIL : sale@zehuacranes.com

ADDRESS : Xinxiang City, Henan Province, China

TEL : 08619562739544

WEB : <https://www.zehuacranes.com>



Develop innovation



DIRECTORY

目录

► About Us

Company Introduction - Team Introduction

► PRODUCT OVERVIEW

Main Data - Features - Casea

► Why Us

Team Adv - Commit to Cooperate

DIRECTORY



ABOUT US



COMPANY PROFILE

■ INTRODUCTION TO ZEHUA HEAVY INDUSTRY

ZEHUA HEAVY INDUSTRY - YOUR TRUSTED PARTNER FOR CUSTOMIZED & INTELLIGENT LIFTING SOLUTIONS HENAN ZEHUA HEAVY INDUSTRY EQUIPMENT CO., LTD. SPECIALIZES IN THE R&D, MANUFACTURING, AND SERVICE OF HIGH-PERFORMANCE LIFTING EQUIPMENT. WITH YEARS OF INNOVATION, WE OFFER FIVE CORE PRODUCT LINES: INTELLIGENT EUROPEAN CRANES, MULTI-FUNCTIONAL CRANES (ALUMINUM ELECTROLYSIS, ROASTING, ANODE HANDLING), PORT CRANES, MARINE CRANES, AND METALLURGICAL CRANES.

COMPANY PROFILE

OUR CRANES SERVE GLOBAL INDUSTRIES—METALLURGY, MINING, ENERGY, LOGISTICS, AND MORE—TRUSTED BY TOP ENTERPRISES LIKE SINOPEC, CHINA POWER INVESTMENT, AND ALUMINUM CORPORATION OF CHINA. WE EXPORT TO 100+ COUNTRIES, INCLUDING AFRICA, SOUTHEAST ASIA, THE MIDDLE EAST, AND THE AMERICAS, BACKED BY ISO CERTIFICATIONS AND FULL-CYCLE PRODUCTION CAPABILITIES.



AT ZEHUA, WE COMBINE CUTTING-EDGE TECHNOLOGY, RIGOROUS QUALITY CONTROL, AND DEDICATED AFTER-SALES SUPPORT TO DELIVER TAILOR-MADE SOLUTIONS. OUR MISSION: BUILDING A CENTURY-OLD CRANE BRAND WITH EXCELLENCE AND RELIABILITY. ELEVATE YOUR OPERATIONS WITH ZEHUA HEAVY INDUSTRY!

60+ ORGANIZATION
Focus on the world

270+ PERSONNEL
To make better products

80+ RESEARCHER
TOP global work experience

120+ COUNTRY
Serve with heart

PRODUCT OVERVIEW

■ SINGLE GIRDER OVERHEAD CRANE



Single girder overhead crane is specifically designed for mild or moderate workshop operating conditions. It adopts a modular design and has the advantages of high strength, light weight, and maintenance free. The trolley and crane are controlled by frequency converters, which helps to reduce oscillation during traveling.

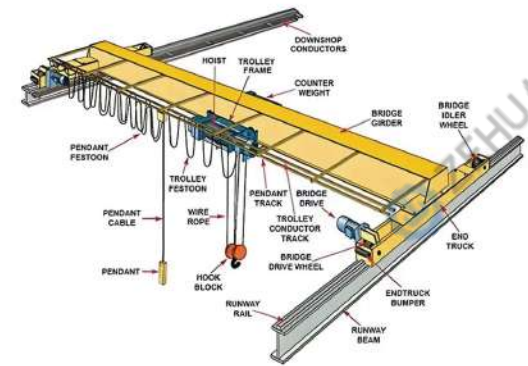


■ MAIN SPECIFICATIONS

Model	Capacity (t)	Outreach (m)	Lifting speed (m/min)	Hook travel (m)	Slewing speed (r/min)
SWL02-00	2	10	0-15	30	0-1
SWL03-00	3	12	0-15	40	0-1
SWL05-00	5	18	0-12	50	0-0.6
SWL10-00	10	20	0-12	50	0-0.5

■ FEATURES

- ▲ Overload protection device
- ▲ Over hoisting protection device
- ▲ Trolley stop
- ▲ Crane bumpers
- ▲ Travel limit switches
- ▲ Lifting hook with safety catch
- ▲ Current overload protection
- ▲ Voltage lower protection
- ▲ Emergency stop system
- ▲ Double lifting speed
- ▲ Traveling speed by inverter



■ CASES



PRODUCT OVERVIEW

DOUBLE GIRDER OVERHEAD CRANE



Double girder bridge overhead crane is composed with double girder frame, crane travelling endtruck, and the top running trolley with lifting and travelling device. The cranes are equipped with frequency inverter, which makes the crane speeds adjusted. It could move very slow which makes it possible to do very accurate works.

According to different operating conditions, it can be equipped with various lifting tools such as grabbuckets, electromagnetic suction cups, and electromagnetic hanging beams to achieve special purpose operations. Widely used in fields such as metallurgy, warehousing, papermaking, shipbuilding, etc.



MAIN SPECIFICATIONS

Model	Capacity (t)	Span (m)	Lifting height (m)	Work class
NLH05-00	5	7-32	6/9/12/15	A5/A6/A7
NLH10-00	10	7-32	6/9/12/15	A5/A6/A7
NLH16-00	16	7-32	6/9/12/15	A5/A6/A7
NLH20-00	20	7-32	6/9/12/15	A5/A6/A7
NLH32-00	32	7-32	6/9/12/15	A5/A6/A7
QD50-00	50	15-32	9/15/15/18	A5/A6/A7
QD75-00	75	15-32	9/15/15/18	A5/A6/A7
QD125-00	125	15-32	9/15/15/18	A5/A6/A7

FEATURES

- ▲ Easy for installation and maintenance;
- ▲ According to the use frequency, divided into working grades A5, A6, A7;
- ▲ This crane operation is completed in driver's chamber;
- ▲ Depending on lifting cargo, crane can be equipped with hanging beam magnet or magnet chuck or Grab or C hook;
- ▲ Lifting capacity ranges from 5t to 500t;
- ▲ Crane is equipped with all moving limit switch, loading limit and other standard safety devices, to promise crane work safe;
- ▲ Different models as you require QD, QZ, LH, QP, QE, QY, QB, QC, QN, etc.
- ▲ Long lifetime span: 25-50 years;

PRODUCT OVERVIEW

■ SINGLE GIRDER GANTRY CRANE



Gantry cranes, are mounted and operated on ground level rails. Gantry cranes are particularly suitable for outdoor applications such as warehouses and terminals where they can be lifted and operated without the need for a building structure. In addition, gantry cranes can provide high-quality solutions for wide rooms where the existing structure is not capable of carrying an overhead crane, or for factory buildings where the addition of load-bearing beams would result in a loss of floor space.



■ MAIN DATA

Model	Capacity (t)	Span (m)	Lifting height (m)	Work class
MH05-00	5	7-32	6/9/12/15	A3/A4/A5
MH10-00	10	7-32	6/9/12/15	A3/A4/A5
MH16-00	16	7-32	6/9/12/15	A3/A4/A5
MH20-00	20	7-32	6/9/12/15	A3/A4/A5
MH32-00	32	7-32	6/9/12/15	A3/A4/A5

■ FEATURES

- ▲ Safety features like flashing beacons and emergency stops built in according to crane dimensions
- ▲ Safety loops to avoid collisions
- ▲ Derailment catches with semi gantry and rail cleaners for smooth crane movement
- ▲ Storm locks and tie down to prevent sliding or falling in heavy winds
- ▲ Wind speed meter gives audible signal to prompt safety actions
- ▲ Flexible structure prevents sticking during movement
- ▲ Compact hoist with excellent hook approaches
- ▲ Key mechanical components designed specially for cranes
- ▲ Semi and full gantry options

■ CASEA



PRODUCT OVERVIEW

DOUBLE GIRDER GANTRY CRANE



Double girder hook gantry crane is a large loading machine widely used in open-air material handling, with the advantages of large lifting capacity, large operating space, high utilisation of yard area, low investment in infrastructure and low operating costs. Therefore, it is widely used in industrial and mining, traffic, transport, engineering construction and other departments.

MAIN DATA

Model	Capacity (t)	Span (m)	Lifting height (m)	Work class
MG10-00	10	7-32	6/9/12/15	A5/A6/A7
MG16-00	16	7-32	6/9/12/15	A5/A6/A7
MG20-00	20	7-32	6/9/12/15	A5/A6/A7
MG32-00	32	7-32	6/9/12/15	A5/A6/A7
MG50-00	50	15-40	9/12/15	A5/A6/A7
MG100-00	100	15-40	9/12/15	A5/A6/A7

FEATURES

- ▲ The portal frame adopts flexible hinge structure, which transforms the portal frame from superstatic structure to static structure;
- ▲ The main beam adopts T-beam, which ensures the welding quality of important weld seams, and at the same time reduces the amount of welding and effectively controls the welding deformation;
- ▲ The crane traveling mechanism adopts havers hinge structure and split wheels, which is simple in structure and light in weight.

CASEA



PRODUCT OVERVIEW

RAIL MOUNTED CONTAINER GANTRY CRANE



Rail container gantry crane is suitable for handling and loading and unloading of international standard containers and railway wide containers in container yards or transfer stations of ports wharves, railways, logistics and so on. It is supported on the track by several sets of steel wheels powered by utility electricity, and consists of large vehicle mechanism, small vehicle assembly, gantry, power system, and special spreader for containers.

MAIN DATA

Model	Capacity (t)	Span (m)	Lifting height (m)	Work class
RMG35-00	35	20-32	12/15/18	A6/A7/A8
RMG41-00	41	20-32	12/15/18	A6/A7/A8
RMG45-00	45	20-32	12/15/18	A6/A7/A8
RMG50-00	50	20-32	12/15/18	A6/A7/A8

FEATURES

- ▲ Specialising in providing upper rotating (trolley rotation) rail container gantry cranes, lower rotating (spreader rotation) rail container gantry cranes, cantilevered, non-cantilevered rail container gantry cranes, rail container gantry cranes for railways;
- ▲ Standard two-way flexible resistance anti-shaking system, optional multifunctional frequency conversion anti-shaking micro-system and electronic anti-shaking system, anti-shaking effect is remarkable, easy to maintain, and improve the container's resistance to shaking;
- ▲ CMS intelligent service management system, real-time monitoring of equipment operation status;
- ▲ Vector frequency conversion, power feedback, torque balance control technology, energy saving and environmental protection, convenient and efficient;
- ▲ Automatic fault detection and real-time data display technology, safe and reliable;
- ▲ Provide a variety of operating modes - manual semi-automatic automation remote operation, advanced technology, stable performance;
- ▲ Core technologies such as automatic operation and positioning, intelligent box-to-box, trajectory intelligent control, intelligent safety protection;
- ▲ Complete safety measures such as high wind alarm and safety dynamic scanning.

CASEA



PRODUCT OVERVIEW

SHIPBUILDING GANTRY CRANE



Shipbuilding gantry cranes are commonly used in industries such as shipbuilding, wind power, and offshore engineering. They are primarily utilized for product lifting, assembly, and final assembly and possess various functions such as lifting, hoisting, and segment turning in midair. The turning of segments and the assembly of ship hulls are particularly crucial in shipbuilding operations. The crane primarily consists of a gantry structure, an upper trolley, a lower trolley, a crane traveling mechanism, an electric control system, a maintenance crane, an access elevator, a power supply cable drum, a windproof device, and a deviation correction device. In the shipbuilding industry, upper and lower traversing trolleys are commonly used; in the wind power and offshore engineering industries, both upper and lower traversing trolleys and parallel trolley types are employed, depending on the operational conditions. The design, manufacturing, and inspection of these cranes comply with domestic and international standards such as FEM, DIN, IEC, AWS, and GB.

FEATURES

- ▲ Multi-lifting point synchronous control technology measures the position of each lifting point through encoders and dynamically adjusts to ensure synchronous operation of all lifting points.
- ▲ A crane safety management system that monitors the operating status of various mechanisms of the equipment in real time.
- ▲ The crane's operating mechanism has an automatic deviation correction function.

MAIN DATA

Model	Capacity (t)	Span (m)	Lifting speed (m/min)	Lifting height (m)	Work class
CM200t	200	35-120	0-5	60	A5
CM300t	300	35-120	0-5	60	A5
CM400t	400	35-120	0-5	60	A5
CM500t	500	35-120	0-5	80	A5
CM800t	800	35-120	0-5	80	A5

CASEA



PRODUCT OVERVIEW

■ MARINE TELESCOPIC BOOM CRANE



Marine telescopic boom cranes have a compact design and are able to perform a wide range of loadhandling tasks safely and reliably in the challenging marine environment. The telescopic jib ensures that the crane can serve a large working area on the vessel. Standard cranes have lifting capacities ranging from two to ten tonnes, with outreaches of up to 20m. Higher capacities are available upon request. The crane is controlled from an operator platform above the slewing ring, with radio remote control available as an option. The crane controls provide smooth and precise movements of all crane motions. Two motions can be performed simultaneously, but at reduced speeds.

■ MAIN DATA

Model	Capacity(t)	Outreach (m)	Lifting speed(m/min)	Hook travel(m)	Slewing speed(r/min)
SWL02-00	2	10	0-15	30	0-1
SWL03-00	3	12	0-15	40	0-1
SWL05-00	5	18	0-12	50	0-0.6
SWL10-00	10	20	0-12	50	0-0.5

■ STANDARD FEATURES

- ▲ Self-contained with integrated electro-hydraulic power pack
- ▲ Precise stepless speed control
- ▲ Easy maintenance 360 degree continuous slewing
- ▲ Emergency lowering

■ OPTIONAL FEATURES

- ▲ Star-delta starter for low starting currents
- ▲ Limit switches for slewing and hoisting
- ▲ External power pack
- ▲ Floodlights
- ▲ Portable radio electric remote control unit
- ▲ Different pedestal heights
- ▲ Enclosed operator cabin
- ▲ Designed for extremely low temperatures (Arctic climate)
- ▲ Personnel handling
- ▲ Load monitoring system
- ▲ Other features available upon request



PRODUCT OVERVIEW

■ MARINE STIFF BOOM CRANE



Marine stiff boom cranes have a compact design and are able to perform a wide range of loadhandling tasks safely and reliably in the challenging marine environment. Standard cranes have lifting capacities ranging from two to ten tonnes, with outreaches of up to 20m. Higher capacities are available upon request. The crane is controlled from an operator platform above the slewing ring, with radio remote control available as an option.

The crane controls provide smooth and precise movements of all crane motions. Two motions can be performed simultaneously, but at reduced speeds.

■ MAIN DATA

Model	Capacity(t)	Outreach (m)	Lifting speed(m/min)	Hook travel(m)	Slewing speed(r/min)
SWL02-00	2	10	0-15	30	0-1
SWL03-00	3	12	0-15	40	0-1
SWL05-00	5	18	0-12	50	0-0.6
SWL10-00	10	20	0-12	50	0-0.5

■ STANDARD FEATURES

- ▲ Self-contained with integrated electro-hydraulic power pack
- ▲ Precise stepless speed control
- ▲ Easy maintenance
- ▲ 360 degree continuous slewing

■ OPTIONAL FEATURES

- ▲ Star-delta starter for low starting currents
- ▲ Limit switches for slewing and hoisting
- ▲ External power pack
- ▲ Floodlights
- ▲ Portable radio electric remote control unit
- ▲ Different pedestal heights
- ▲ Enclosed operator cabin
- ▲ Designed for extremely low temperatures (Arctic climate)
- ▲ Personnel handling
- ▲ Load monitoring system
- ▲ Other features available upon request



PRODUCT OVERVIEW

■ MARINE KNUCKLE BOOM CRANE



The marine folding boom crane consists of a base, a slewing platform, a basic arm, a folding arm, and a winch. Usually used to lift various conventional goods. Standard cranes have lifting capacities ranging from two to ten tonnes, with outreaches of up to 20m. Higher capacities are available upon request.

The crane is controlled from an operator platform above the slewing ring, with radio remote control available as an option.

The crane controls provide smooth and precise movements of all crane motions. Two motions can be performed simultaneously, but at reduced speeds.

■ MAIN DATA

Model	Capacity(t)	Outreach (m)	Lifting speed(m/min)	Hook travel(m)	Slewing speed(r/min)
SWL02-00	2	10	0-15	30	0-1
SWL03-00	3	12	0-15	40	0-1
SWL05-00	5	18	0-12	50	0-0.6
SWL10-00	10	20	0-12	50	0-0.5

■ STANDARD FEATURES

- ▲ Self-contained with integrated electro-hydraulic power pack
- ▲ Precise stepless speed control
- ▲ Easy maintenance
- ▲ 360 degree continuous slewing

■ OPTIONAL FEATURES

- ▲ Star-delta starter for low starting currents
- ▲ Limit switches for slewing and hoisting
- ▲ External power pack
- ▲ Floodlights
- ▲ Portable radio electric remote control unit
- ▲ Different pedestal heights
- ▲ Enclosed operator cabin
- ▲ Designed for extremely low temperatures (Arctic climate)
- ▲ Personnel handling
- ▲ Load monitoring system
- ▲ Other features available upon request



PRODUCT OVERVIEW

OFFSHORE CRANE



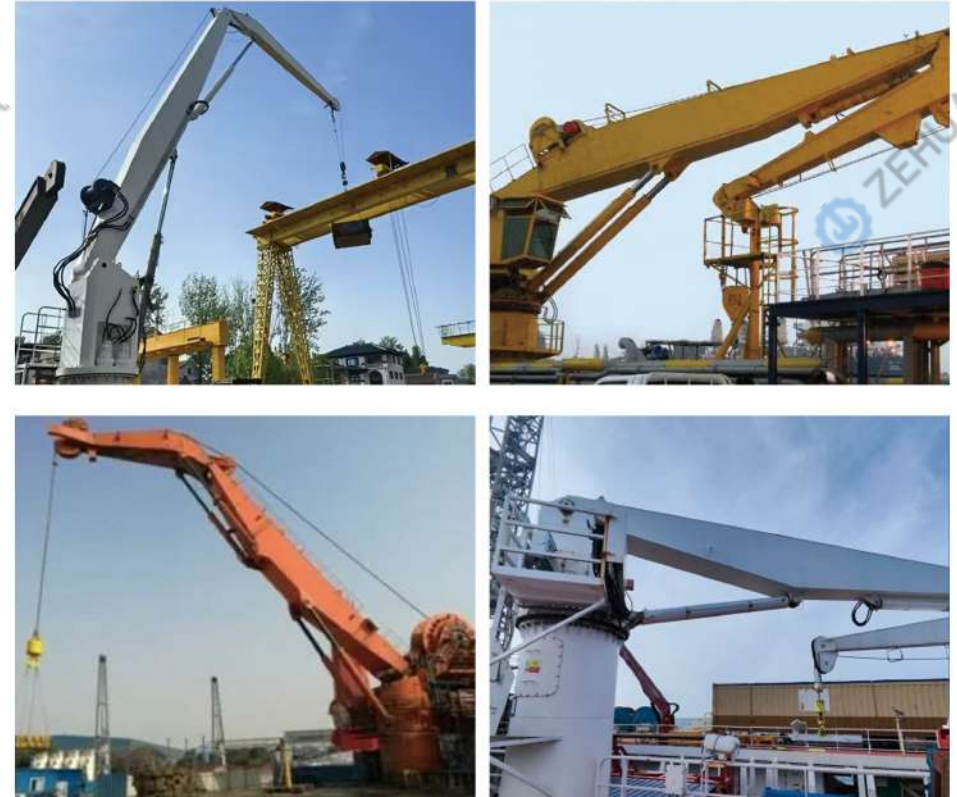
MAIN DATA

Model	Capacity(t)	Outreach (m)	Lifting speed(m/min)	Hook travel(m)	Slewing speed(r/min)
SWL02-00	2	20	0-20	50	0-0.5
SWL03-00	3	30	0-20	50	0-0.5
SWL05-00	5	30	0-15	50	0-0.5
SWL10-00	10	30	0-12	50	0-0.5
SWL20-00	20	30	0-12	50	0-0.5

FEATURES

- ▲ Lifting capacity range from 1t to 40t SWL
- ▲ Outreach from 10m to 40m
- ▲ Cranes can be designed as fixed-boom or knuckle-jib or telescopic -boom type
- ▲ LMI system
- ▲ Fully-equipped,spacious, air-conditioned, ergonomically designed operator cabin
- ▲ Certified for ship-to-ship operations(optional)
- ▲ Equip the hydraulic system with an air cooler(optional)
- ▲ Crane can be designed to work in explosion-proof areas(optional)

CASEA



PRODUCT OVERVIEW

■ CARGO CRANE



The crane is mainly used on bulk cargo ships or barges, and is a type of cargo transportation equipment. It is one of the most important production and safety equipment in cargo ships, with high requirements for safety, reliability, maintainability, wind resistance, and corrosion resistance. It has the characteristics of large lifting capacity, convenient operation, impact resistance, good braking performance, safety and reliability, high loading and unloading efficiency, and good applicability to goods.

All our crane products use imported hydraulic components from Europe and America; Adopting full hydraulic drive, it has the characteristics of stable operation, adjustable speed level, 360 degree rotation, compact structure, combination of electro-hydraulic control and manual control, convenient operation, safety and reliability.

■ MAIN DATA

Model	Capacity(t)	Outreach (m)	Lifting speed(m/min)	Hook travel(m)	Slewing speed(r/min)
SWL20-00	20	25	0-25	50	0-1.5
SWL30-00	30	28	0-25	50	0-1.5
SWL40-00	40	32	0-25	50	0-1
SWL50-00	50	40	0-25	50	0-1

■ THE CRANE OFFERS MULTIPLE BENEFITS

- ▲ Excellent positioning performance to reduce time in port
- ▲ Prepared for grab equipment
- ▲ Closed loop hydraulic system
- ▲ Stepless and independent crane control with hoisting, luffing and slewing motions
- ▲ All machinery is weather-protected inside crane housing
- ▲ Level-luffing
- ▲ Up to SWL 50t

■ CASEA



PRODUCT OVERVIEW

ANCHOR WINCH TOWING WINCH AND MOORING WINCH



Anchoring and mooring of your vessel not only requires knowledgeable crew, it also demands reliable and high quality deck machinery.

STANDARD SPECIFICATIONS

- ▲ Enclosed gearbox with gears running in oil bath
- ▲ Band brake with maintenance free brake assembly and brake spindle in stainless steel
- ▲ Brake drum surface of stainless steel
- ▲ Mooring drum of split type (tension part/storage part)
- ▲ Main shaft bearings in bearing brackets of split type marine bronze bushing for easy maintenance
- ▲ Drum clutch with hand lever
- ▲ Hydraulic motor, low-speed/high-torque type with built-on control valve unit
- ▲ Standard bolted foundation suitable for alignment with steel liner or epoxy resin (chock fast)

OPTIONS

- ▲ 2-speed hydraulic motor for high slack-rope speed
- ▲ Auto-tension
- ▲ Manually operated spring-applied band brake with brake setting indicator
- ▲ Hydraulically operated spring-applied band brake with brake setting indicator
- ▲ Mooring drum of non-split type
- ▲ Operation by wireless controller
- ▲ Mooring rope tension monitoring based on load-cell reading in drum brake anchor
- ▲ Foundations suitable for direct welding to deck
- ▲ High pressure and low pressure hydraulic motors



Electric Anchor Windlass
Capacity:6KN-240
KN Speed:9~12m/min



Hydraulic Anchor Winch
Capacity:6KN~240KN-
Speed:9~12m/min



Hydraulic mooring winch
Capacity:5t~100t
Rope length:1000m
Rope speed:9~12m/min



Electric towing winch
Capacity:5t~100t
Rope length:1000m
Rope speed:9~12m/min



PRODUCT OVERVIEW

■ BOAT HOIST CRANE



The tire type yacht handling crane is specially designed for various types of yachts, suitable for lifting ships in yacht clubs, water amusement parks, naval ports, and other units. Safe and reliable with multiple steering modes, equipped with a diesel engine, and flexible maneuverability. The yacht hoist crane mainly consists of gantry frame, lifting mechanism, crane traveling mechanism, power station, and electronic control system, with a flexible steering system and excellent working performance.

■ MAIN PERFORMANCE PARAMETERS

- ▲ Lifting capacity: 32t-1200t
- ▲ Lifting speed: 0-2m/min (full load)
- ▲ Operating speed: 0-30m/min (full load), 0-40m/min (no load)
- ▲ Climbing ability: 4%

■ FEATURES

- ▲ Equipped with a diesel engine to provide power, using hydraulic drive
- ▲ Multiple lifting point design, high synchronization, stability and reliability
- ▲ It has various walking modes such as straight travel, oblique travel, and turning in place
- ▲ Suitable for various road surfaces such as concrete and gravel roads, with a 4% climbing ability
- ▲ The main beam and crossbeam are hinged to eliminate internal stress caused by uneven road surfaces.
- ▲ Wireless remote control



PRODUCT OVERVIEW

■ RUBBER TIRE GANTRY CRANE



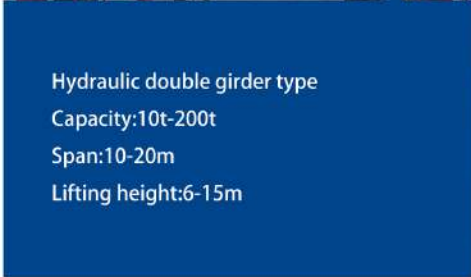
Electric single girder type
Capacity:2t~20t
Span:10-20m
Lifting height:3-12m



Electric double girder type
Capacity:10t~200t
Span:10-20m
Lifting height:6-15m



Hydraulic Single girder type
Capacity:10t~100t
Span:10-20m
Lifting height:3-12m



Hydraulic double girder type
Capacity:10t-200t
Span:10-20m
Lifting height:6-15m



■ PORTAL CRANE

Portal cranes are widely used in ports, docks, yards, and other places to complete the loading,unloading, and transfer operations of ships and vehicles carrying goods. its design, manufacturing and inspection comply with advanced domestic and international standards such as DIN, FEM, IECAWS,GB,as well as the latest national standards issued.Portal cranes are divided into two types based on the structural form of the boom: single boom and four link. The single arm gantry crane has a simple structure, large lifting capacity, and light selfweight. The four link gantry crane adopts a combined boom system to achieve horizontal movement of goods during the luffing process, with the characteristics of small horizontal drop, stable luffing and low power consumption. Both types of gantry cranes can meet the loading and unloading requirements of general cargo, bulk cargo, and containers, and have the characteristics of wide application range, high operating efficiency, and stable operation of the entire machine.



Single Jib Fixed Portal Crane
Capacity:10t-40t
Working radius:10-20m



Single Jib Traveling Portal Crane
Capacity:10t~200t
Working radius:20-40m

WHY US



TEAM ADVANTAGE

Team advantage

■ A WIDE RANGE OF INDUSTRIES

Zehua's thorough and insightful understanding both within and outside the industry is beyond the reach of any competitor. In order to achieve continuous development, various organizations constantly track information on multiple aspects such as the dynamics of industry competition, changes in the regulatory environment, and the development of technological frontiers. Our knowledge and skills extend to various industries and functions. By leveraging top-notch talents, research capabilities and problem-solving skills, we help you quickly find the answers you desire in any corner of the world.

■ PROFESSIONAL TEAM

Because customers always ask us to solve difficult problems, we have developed solutions that are both technical and analytical. To maintain this advantage, we invest more than 200 million US dollars in research projects every year. Our team of knowledge experts consists of over 80 members, responsible for supporting front-line consulting teams and conducting in-depth research. The consultants we hire have undergone multiple rounds of screening and have received rigorous training in problem-solving methods and techniques within Zehua, ensuring that they can handle all kinds of difficult problems with ease. Meanwhile, the consulting team will sort out and summarize the achievements and discoveries we have made in our work and share them with other consulting teams.

COMMITMENT TO COOPERATION

Team advantage

■ DEVOTE OURSELVES WHOLEHEARTEDLY TO ASSISTING CLIENTS IN ACHIEVING SUCCESS

We firmly believe that always putting the interests of our clients above those of the company and maintaining independence will lead to the success of our clients: everything we do is centered around the interests and impact of our clients. This is the core of our evaluation system and also the criterion we use to assess client projects and opportunities. Our evaluation system operates based on the extent of the impact on customers rather than the achievement of revenue targets.

■ OUR VIEWPOINTS ARE OBJECTIVE AND INDEPENDENT

We are always outspoken about the truth we observe, even though it is not what everyone wants to see. The private partnership system ensures independence, thus enabling the provision of fair and objective advice and exerting influence on clients.

