



Henan Yuntian Crane Co.,Ltd

E-mail:marketing01@ytgrp.com

Mob:+86-13673380973

Tel:+86-373-3055523

Web:www.ytgrp.com

Crane Industrial Park, Xinxiang City,
Henan Province, China



Henan Yuntian Crane Co.,Ltd



Company profile

Yuntian Crane, established in 2009, located in the crane hometown of China (cover more than 2/3 crane market in China)–Xinxiang city, Henan province, one very professional and large industry crane group in China. We specialize in the research and development, production, sales and service of more than 80 types of cranes and accessories in five series, including overhead cranes, gantry cranes, marine&offshore cranes, rubber tire gantry cranes,hoists&winches.

1. ISO 9001:2015,CE,GOST,BV Approved Company
2. More than 2,500 sets of various advanced processing equipment
3. The Factory covers a total fabrication area of more than 1,200,000 Sq. Mtr
4. Total Manpower of more than 280 employees
5. 60 service organizations around the world
6. A technical team composed of more than 80 senior engineers
7. Export to 120 countries around the world.



Table of contents

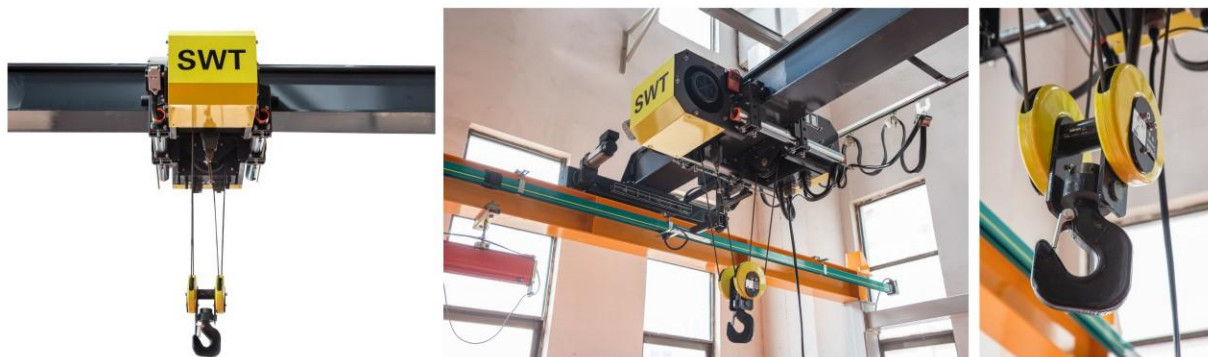
Industrial Crane	
Single girder overhead crane	03
Double girder overhead crane	05
Single girder gantry crane	07
Double girder gantry crane	09
Rail mounted container crane	11
Shipbuilding Gantry Crane	13
Ship/deck equipment	
Marine telescopic boom crane	15
Marine stiff boom crane	17
Marine knuckle boom crane	19
Offshore crane	21
Cargo crane	23
Anchor winch and Mooring winch	25
Material handling/loading crane	
Boat hoist crane	27
Rubber tire gantry crane	29
Portal crane	30



Single Girder Overhead Crane



Single girder overhead crane is specifically designed for mild or moderate workshop operating conditions. It adopts a modular design and has the advantages of high strength, light weight, and maintenance free. The trolley and crane are controlled by frequency converters, which helps to reduce oscillation during traveling.

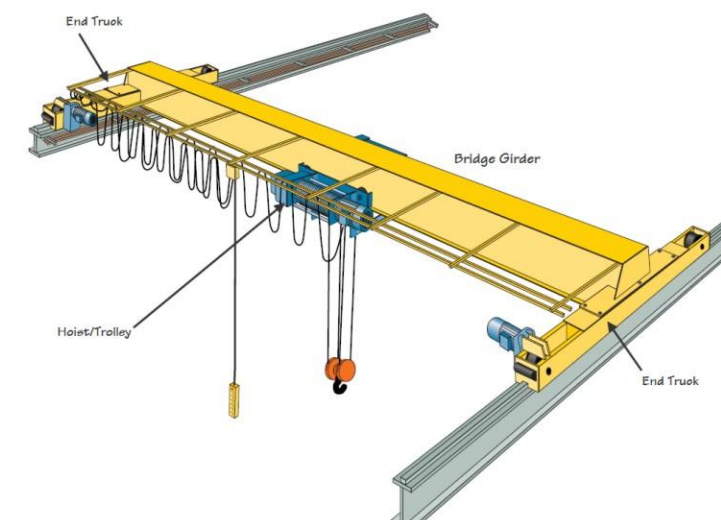


Main specifications

Model	Capacity(t)	Span(m)	Lifting height(m)	Work class
HD03-00	3	7~32	3/6/9/12/15	A3/A4/A5
HD05-00	5	7~32	3/6/9/12/15	A3/A4/A5
HD10-00	10	7~32	6/9/12/15	A3/A4/A5
HD16-00	16	7~32	6/9/12/15	A3/A4/A5

Features

- Overload protection device
- Over hoisting protection device
- Trolley stop
- Crane bumpers
- Travel limit switches
- Lifting hook with safety catch
- Current overload protection
- Voltage lower protection
- Emergency stop system
- Double lifting speed
- Traveling speed by inverter



Cases



Double Girder Overhead Crane



Double girder bridge overhead crane is composed with double girder frame, crane travelling end truck, and the top running trolley with lifting and travelling device. The cranes are equipped with frequency inverter, which makes the crane speeds adjusted. It could move very slow which makes it possible to do very accurate works.

According to different operating conditions, it can be equipped with various lifting tools such as grab buckets, electromagnetic suction cups, and electromagnetic hanging beams to achieve special purpose operations. Widely used in fields such as metallurgy, warehousing, papermaking, shipbuilding, etc.



Main specifications

Model	Capacity(t)	Span(m)	Lifting height(m)	Work class
NLH05-00	5	7~32	6/9/12/15	A5/A6/A7
NLH10-00	10	7~32	6/9/12/15	A5/A6/A7
NLH16-00	16	7~32	6/9/12/15	A5/A6/A7
NLH20-00	20	7~32	6/9/12/15	A5/A6/A7
NLH32-00	32	7~32	6/9/12/15	A5/A6/A7
QD50-00	50	15~32	9/12/15/18	A5/A6/A7
QD75-00	75	15~32	9/12/15/18	A5/A6/A7
QD125-00	125	15~32	9/12/15/18	A5/A6/A7

Features

- Easy for Installation and maintenance;
- According to the use frequency, divided into working grades A5, A6, A7;
- This crane operation is completed in driver's chamber;
- Depending on lifting cargo, crane can be equipped with hanging beam magnet or magnet chuck or Grab or C hook;
- Lifting capacity ranges from 5t to 500t;
- Crane is equipped with all moving limit switch, loading limit and other standard safety devices, to promise crane work safe
- Different models as you require QD, QZ, LH, QP, QE, QY, QB, QC, QN, etc.
- Long lifetime span: 25-50 years;

Cases



QZ

LH

QE

QL

Single Girder Gantry Crane



Gantry cranes, are mounted and operated on ground level rails.

Gantry cranes are particularly suitable for outdoor applications such as warehouses and terminals, where they can be lifted and operated without the need for a building structure.

In addition, gantry cranes can provide high-quality solutions for wide rooms where the existing structure is not capable of carrying an overhead crane, or for factory buildings where the addition of load-bearing beams would result in a loss of floor space.



Features

- Safety features like flashing beacons and emergency stops built in according to crane dimensions
- Safety loops to avoid collisions
- Derailment catches with semi gantry and rail cleaners for smooth crane movement
- Storm locks and tie down to prevent sliding or falling in heavy winds
- Wind speed meter gives audible signal to prompt safety actions
- Flexible structure prevents sticking during movement
- Compact hoist with excellent hook approaches
- Key mechanical components designed specially for cranes
- Semi and full gantry options

Main Data

Model	Capacity(t)	Span(m)	Lifting height(m)	Work class
MH05-00	5	7~32	6/9/12/15	A3/A4/A5
MH10-00	10	7~32	6/9/12/15	A3/A4/A5
MH16-00	16	7~32	6/9/12/15	A3/A4/A5
MH20-00	20	7~32	6/9/12/15	A3/A4/A5
MH32-00	32	7~32	6/9/12/15	A3/A4/A5

Cases



Double Girder Gantry Crane



Double girder hook gantry crane is a large loading machine widely used in open-air material handling, with the advantages of large lifting capacity, large operating space, high utilisation of yard area, low investment in infrastructure and low operating costs. Therefore, it is widely used in industrial and mining, traffic, transport, engineering construction and other departments.

Features

- 1.The portal frame adopts flexible hinge structure, which transforms the portal frame from super-static structure to static structure;
- 2.The main beam adopts T-beam, which ensures the welding quality of important weld seams, and at the same time reduces the amount of welding and effectively controls the welding deformation;
- 3.The crane traveling mechanism adopts haver hinge structure and split wheels, which is simple in structure and light in weight.

Main Data

Model	Capacity(t)	Span(m)	Lifting height(m)	Work class
MG10-00	10	7~32	6/9/12/15	A5/A6/A7
MG16-00	16	7~32	6/9/12/15	A5/A6/A7
MG20-00	20	7~32	6/9/12/15	A5/A6/A7
MG32-00	32	7~32	6/9/12/15	A5/A6/A7
MG50-00	50	15~40	9/12/15	A5/A6/A7
MG100-00	100	15~40	9/12/15	A5/A6/A7

Cases



Rail Mounted Container Gantry Crane



Rail container gantry crane is suitable for handling and loading and unloading of international standard containers and railway wide containers in container yards or transfer stations of ports, wharves, railways, logistics and so on. It is supported on the track by several sets of steel wheels, powered by utility electricity, and consists of large vehicle mechanism, small vehicle assembly, gantry, power system, and special spreader for containers.

Features

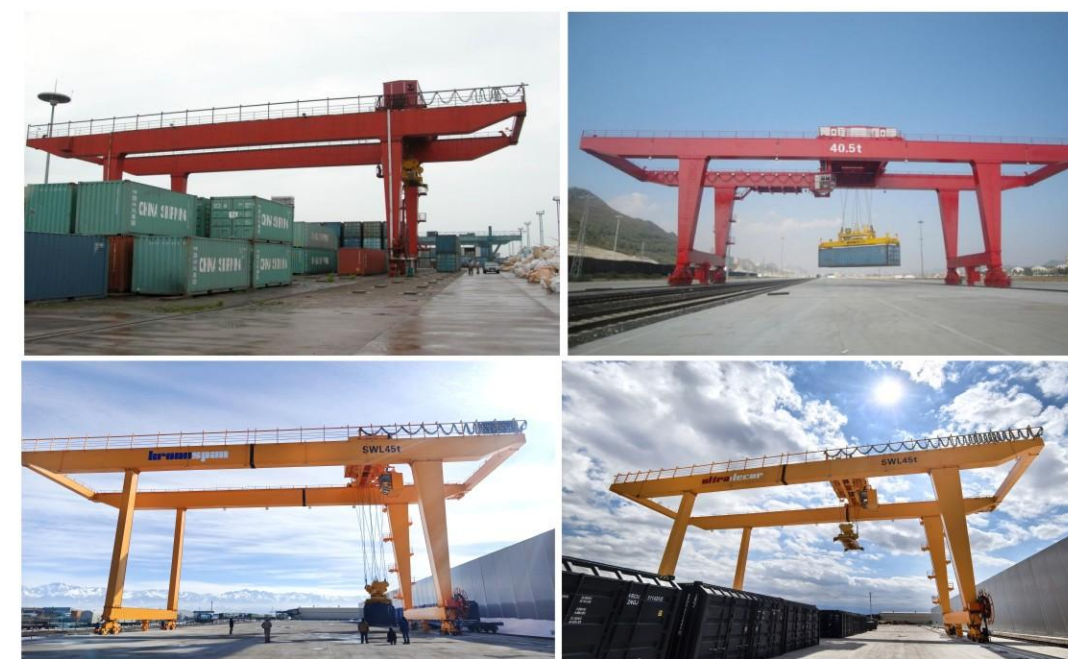
1. Specialising in providing upper rotating (trolley rotation) rail container gantry cranes, lower rotating (spreader rotation) rail container gantry cranes, cantilevered, non-cantilevered rail container gantry cranes, rail container gantry cranes for railways;
2. Standard two-way flexible resistance anti-shaking system, optional multifunctional frequency conversion anti-shaking micro-system and electronic anti-shaking system, anti-shaking effect is remarkable, easy to maintain, and improve the container's resistance to shaking;

3. CMS intelligent service management system, real-time monitoring of equipment operation status;
4. Vector frequency conversion, power feedback, torque balance control technology, energy saving and environmental protection, convenient and efficient;
5. Automatic fault detection and real-time data display technology, safe and reliable;
6. Provide a variety of operating modes - manual semi-automatic automation remote operation, advanced technology, stable performance;
7. Core technologies such as automatic operation and positioning, intelligent box-to-box, trajectory intelligent control, intelligent safety protection;
8. Complete safety measures such as high wind alarm and safety dynamic scanning.

Main Data

Model	Capacity(t)	Span(m)	Lifting height(m)	Work class
RMG35-00	35	20~32	12/15/18	A6/A7/A8
RMG41-00	41	20~32	12/15/18	A6/A7/A8
RMG45-00	45	20~32	12/15/18	A6/A7/A8
RMG50-00	50	20~32	12/15/18	A6/A7/A8

Cases



Shipbuilding Gantry Crane



Shipbuilding gantry cranes are commonly used in industries such as shipbuilding, wind power, and offshore engineering. They are primarily utilized for product lifting, assembly, and final assembly, and possess various functions such as lifting, hoisting, and segment turning in midair. The turning of segments and the assembly of ship hulls are particularly crucial in shipbuilding operations. The crane primarily consists of a gantry structure, an upper trolley, a lower trolley, a crane traveling mechanism, an electric control system, a maintenance crane, an access elevator, a power supply cable drum, a windproof device, and a deviation correction device. In the shipbuilding industry, upper and lower traversing trolleys are commonly used; in the wind power and offshore engineering industries, both upper and lower traversing trolleys and parallel trolley types are employed, depending on the operational conditions. The design, manufacturing, and inspection of these cranes comply with domestic and international standards such as FEM, DIN, IEC, AWS, and GB.

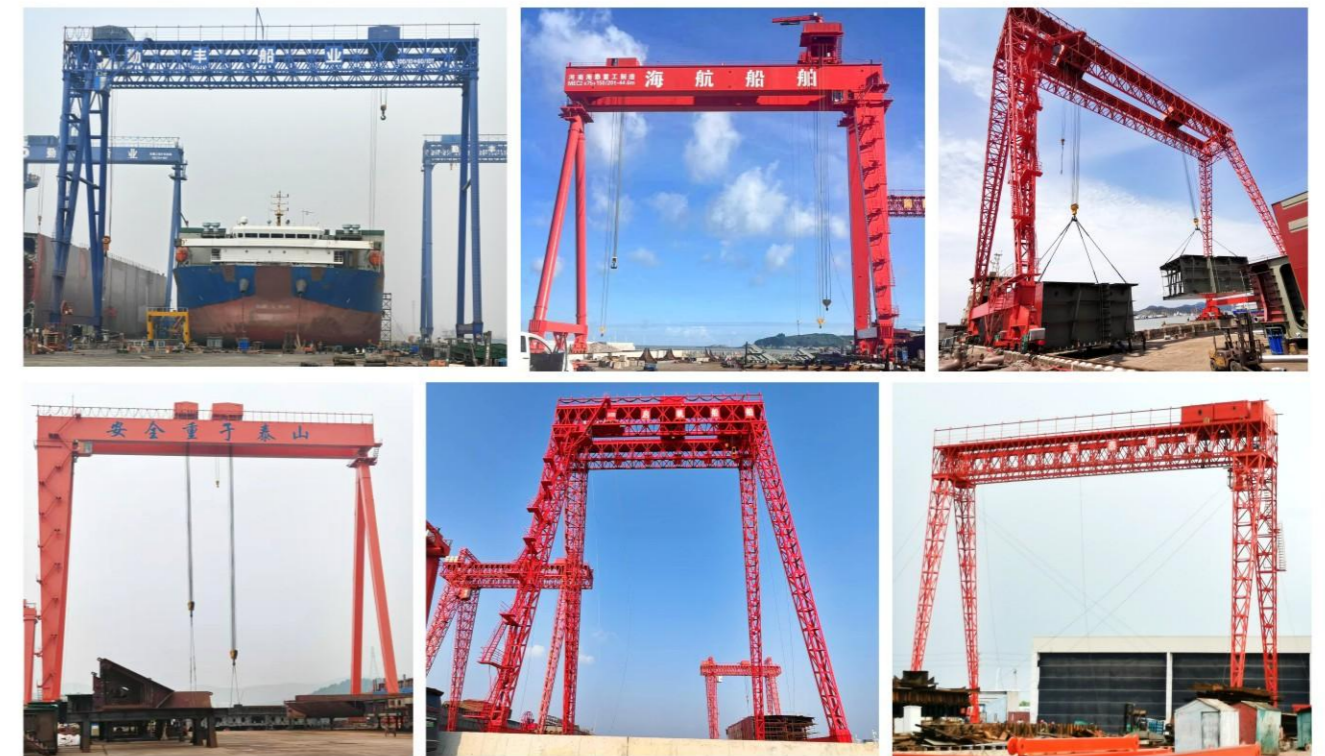
Features

1. Multi-lifting point synchronous control technology measures the position of each lifting point through encoders and dynamically adjusts to ensure synchronous operation of all lifting points.
2. A crane safety management system that monitors the operating status of various mechanisms of the equipment in real time.
3. The crane's operating mechanism has an automatic deviation correction function.

Main Data

Model	Capacity(t)	Span(m)	Lifting speed(m/min)	Lifting height(m)	Work class
CM200t	200	35~120	0-5	60	A5
CM300t	300	35~120	0-5	60	A5
CM400t	400	35~120	0-5	80	A5
CM500t	500	35~120	0-5	80	A5
CM800t	800	35~120	0-5	80	A5

Cases



Marine Telescopic Boom Crane



Marine telescopic boom cranes have a compact design and are able to perform a wide range of load handling tasks safely and reliably in the challenging marine environment.

The telescopic jib ensures that the crane can serve a large working area on the vessel.

Standard cranes have lifting capacities ranging from two to ten tonnes, with outreaches of up to 20m. Higher capacities are available upon request.

The crane is controlled from an operator platform above the slewing ring, with radio remote control available as an option.

The crane controls provide smooth and precise movements of all crane motions. Two motions can be performed simultaneously, but at reduced speeds.

Main Data

Model	Capacity(t)	Outreach (m)	Lifting speed(m/min)	Hook travel(m)	Slewing speed(r/min)
SWL02-00	2	10	0-15	30	0-1
SWL03-00	3	12	0-15	40	0-1
SWL05-00	5	18	0-12	50	0-0.6
SWL10-00	10	20	0-12	50	0-0.5

Standard features:

- Self-contained with integrated electro-hydraulic power pack
- Precise stepless speed control
- Easy maintenance
- 360 degree continuous slewing
- Emergency lowering

Optional features:

- Star-delta starter for low starting currents
- Limit switches for slewing and hoisting
- External power pack
- Floodlights
- Portable radio electric remote control unit
- Different pedestal heights
- Enclosed operator cabin
- Designed for extremely low temperatures (Arctic climate)
- Personnel handling
- Load monitoring system
- Other features available upon request



Marine Stiff Boom Crane



Marine stiff boom cranes have a compact design and are able to perform a wide range of load handling tasks safely and reliably in the challenging marine environment.

Standard cranes have lifting capacities ranging from two to ten tonnes, with outreaches of up to 20m. Higher capacities are available upon request.

The crane is controlled from an operator platform above the slewing ring, with radio remote control available as an option.

The crane controls provide smooth and precise movements of all crane motions. Two motions can be performed simultaneously, but at reduced speeds.

Main Data

Model	Capacity(t)	Outreach (m)	Lifting speed(m/min)	Hook travel(m)	Slewing speed(r/min)
SWL02-00	2	10	0-15	30	0-1
SWL03-00	3	12	0-15	40	0-1
SWL05-00	5	18	0-12	50	0-0.6
SWL10-00	10	20	0-12	50	0-0.5

Standard features:

- Self-contained with integrated electro-hydraulic power pack
- Precise stepless speed control
- Easy maintenance
- 360 degree continuous slewing
- Emergency lowering

Optional features:

- Star-delta starter for low starting currents
- Limit switches for slewing and hoisting
- External power pack
- Floodlights
- Portable radio electric remote control unit
- Different pedestal heights
- Enclosed operator cabin
- Designed for extremely low temperatures (Arctic climate)
- Personnel handling
- Load monitoring system
- Other features available upon request



Marine knuckle Boom Crane



The marine folding boom crane consists of a base, a slewing platform, a basic arm, a folding arm, and a winch. Usually used to lift various conventional goods.

Standard cranes have lifting capacities ranging from two to ten tonnes, with outreaches of up to 20m. Higher capacities are available upon request.

The crane is controlled from an operator platform above the slewing ring, with radio remote control available as an option.

The crane controls provide smooth and precise movements of all crane motions. Two motions can be performed simultaneously, but at reduced speeds.



Main Data

Model	Capacity(t)	Outreach (m)	Lifting speed(m/min)	Hook travel(m)	Slewing speed(r/min)
SWL02-00	2	10	0-15	30	0-1
SWL03-00	3	12	0-15	40	0-1
SWL05-00	5	18	0-12	50	0-0.6
SWL10-00	10	20	0-12	50	0-0.5

Standard features:

- Self-contained with integrated electro-hydraulic power pack
- Precise stepless speed control
- Easy maintenance
- 360 degree continuous slewing
- Emergency lowering

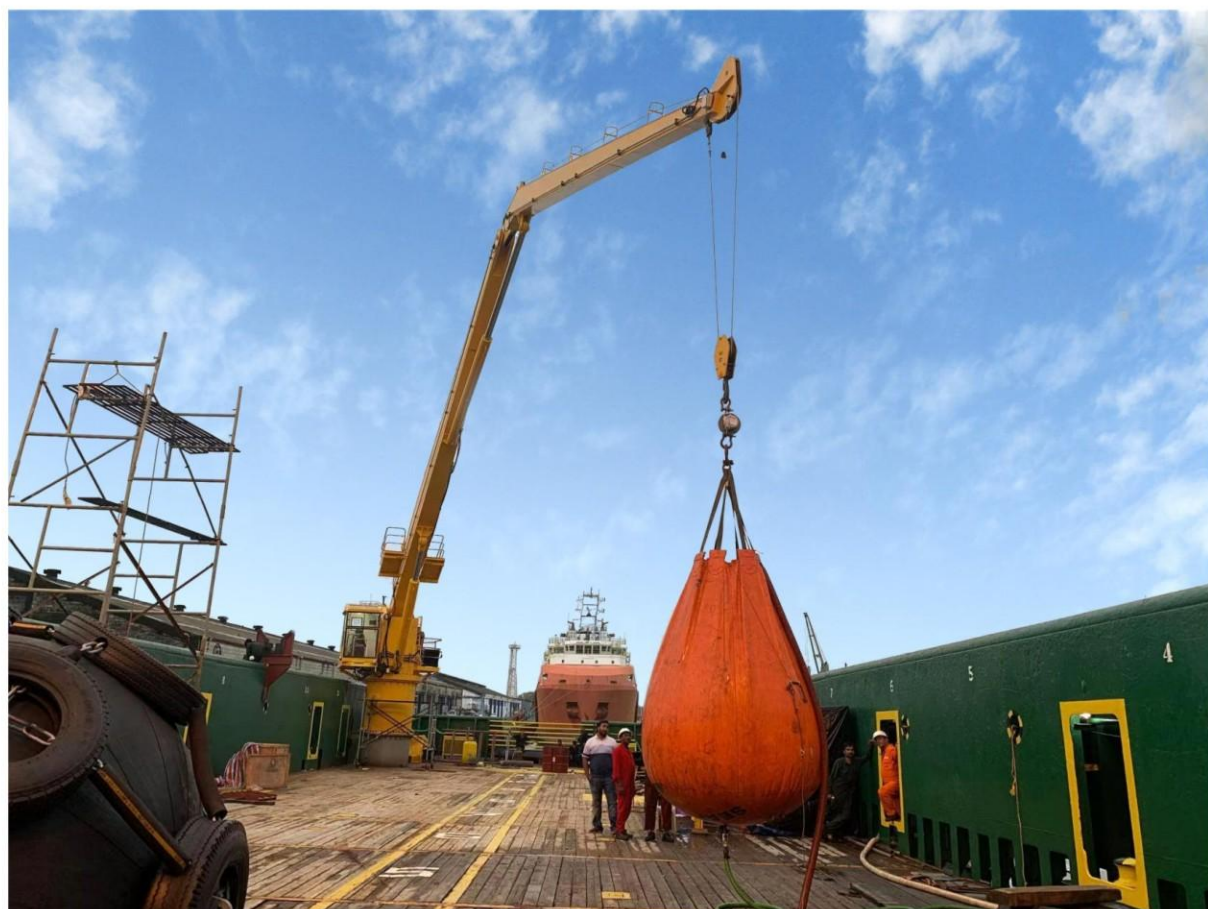


Optional features:

- Star-delta starter for low starting currents
- Limit switches for slewing and hoisting
- External power pack
- Floodlights
- Portable radio electric remote control unit
- Different pedestal heights
- Enclosed operator cabin
- Designed for extremely low temperatures (Arctic climate)
- Personnel handling
- Load monitoring system
- Other features available upon request



Offshore Crane



Features

- Lifting capacity range from 1t to 40t SWL
- Outreach from 10m to 40m
- Cranes can be designed as fixed-boom or knuckle-jib or telescopic -boom type
- LMI system
- Fully-equipped, spacious, air-conditioned, ergonomically designed operator cabin
- Certified for ship-to-ship operations(optional)
- Certified for personnel lift(optional)
- Equip the hydraulic system with an air cooler(optional)
- Crane can be designed to work in explosion-proof areas(optional)

Main Data

Model	Capacity(t)	Outreach (m)	Lifting speed(m/min)	Hook travel(m)	Slewing speed(r/min)
SWL02-00	2	20	0-20	50	0-0.5
SWL03-00	3	30	0-20	50	0-0.5
SWL05-00	5	30	0-15	50	0-0.5
SWL10-00	10	30	0-12	50	0-0.5
SWL20-00	20	30	0-12	50	0-0.5

Cases



Cargo Crane



The crane is mainly used on bulk cargo ships or barges, and is a type of cargo transportation equipment. It is one of the most important production and safety equipment in cargo ships, with high requirements for safety, reliability, maintainability, wind resistance, and corrosion resistance. It has the characteristics of large lifting capacity, convenient operation, impact resistance, good braking performance, safety and reliability, high loading and unloading efficiency, and good applicability to goods.

All our crane products use imported hydraulic components from Europe and America; Adopting full hydraulic drive, it has the characteristics of stable operation, adjustable speed level, 360 degree rotation, compact structure, combination of electro-hydraulic control and manual control, convenient operation, safety and reliability.

The crane offers multiple benefits:

- Excellent positioning performance to reduce time in port
- Prepared for grab equipment
- Closed loop hydraulic system
- Stepless and independent crane control with hoisting, luffing and slewing motions
- All machinery is weather-protected inside crane housing
- Level-luffing
- Up to SWL 50t

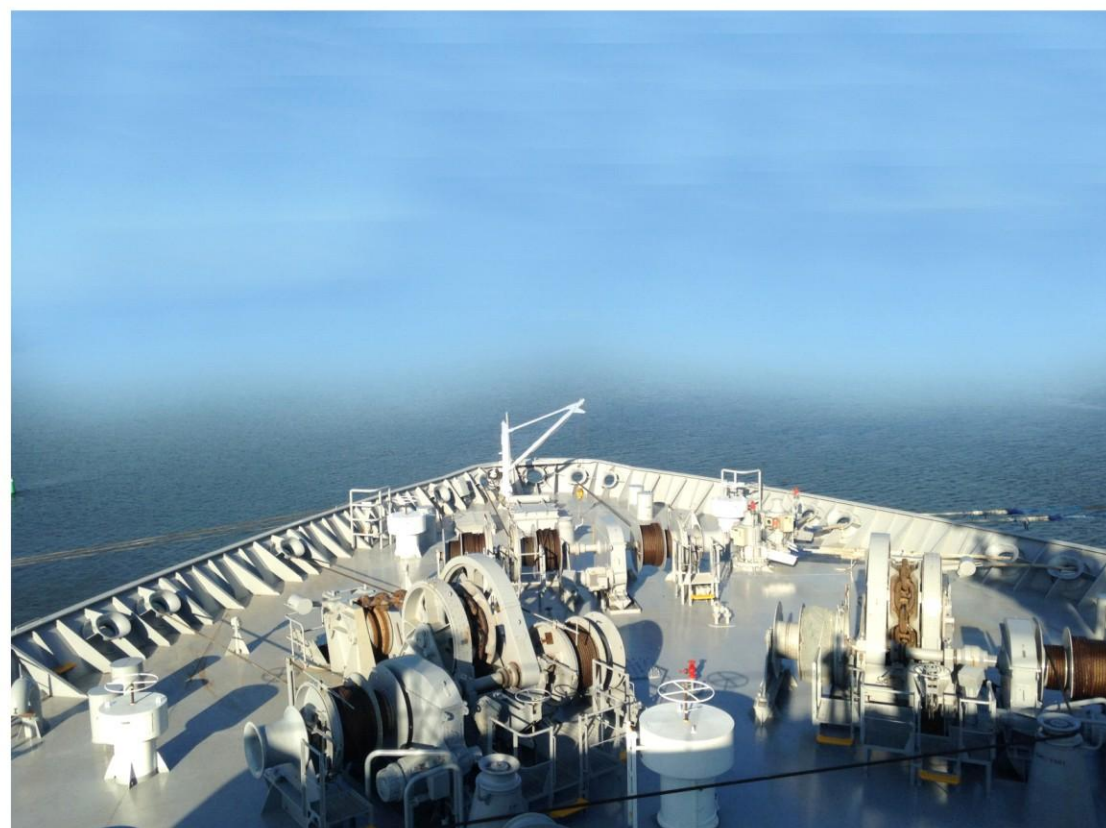
Main Data

Model	Capacity(t)	Outreach (m)	Lifting speed(m/min)	Hook travel(m)	Slewing speed(r/min)
SWL20-00	20	25	0-25	50	0-1.5
SWL30-00	30	28	0-25	50	0-1.5
SWL40-00	40	32	0-25	50	0-1
SWL50-00	50	40	0-25	50	0-1

Cases



Anchor Winch , Towing Winch and Mooring Winch



Anchoring and mooring of your vessel not only requires knowledgeable crew, it also demands reliable and high quality deck machinery.

Standard specifications

- Enclosed gearbox with gears running in oil bath
- Band brake with maintenance free brake assembly and brake spindle in stainless steel
- Brake drum surface of stainless steel
- Mooring drum of split type (tension part/storage part)
- Main shaft bearings in bearing brackets of split type marine bronze bushing for easy maintenance
- Drum clutch with hand lever
- Hydraulic motor, low-speed/high-torque type with built-on control valve unit
- Standard bolted foundation suitable for alignment with steel liner or epoxy resin (chock fast)

Options

- 2-speed hydraulic motor for high slack-rope speed
- Auto-tension
- Manually operated spring-applied band brake with brake setting indicator
- Hydraulically operated spring-applied band brake with brake setting indicator
- Mooring drum of non-split type
- Operation by wireless controller
- Mooring rope tension monitoring based on load-cell reading in drum brake anchor
- Foundations suitable for direct welding to deck
- High pressure and low pressure hydraulic motors



Electric Anchor Windlass
Capacity:6KN~240KN
Speed:9~12m/min



Hydraulic Anchor Winch
Capacity:6KN~240KN
Speed:9~12m/min



Hydraulic mooring winch
Capacity:5t~100t
Rope length:1000m
Rope speed:9~12m/min



Electric towing winch
Capacity:5t~100t
Rope length:1000m
Rope speed:9~12m/min

Boat Hoist Crane



The tire type yacht handling crane is specially designed for various types of yachts, suitable for lifting ships in yacht clubs, water amusement parks, naval ports, and other units. Safe and reliable, with multiple steering modes, equipped with a diesel engine, and flexible maneuverability.

The yacht hoist crane mainly consists of gantry frame, lifting mechanism, crane traveling mechanism, power station, and electronic control system, with a flexible steering system and excellent working performance.

Main performance parameters:

- Lifting capacity: 32t~1200t
- Lifting speed: 0~2m/min (full load)
- Operating speed: 0~30m/min (full load), 0~40m/min (no load)
- Climbing ability: 4%

Features

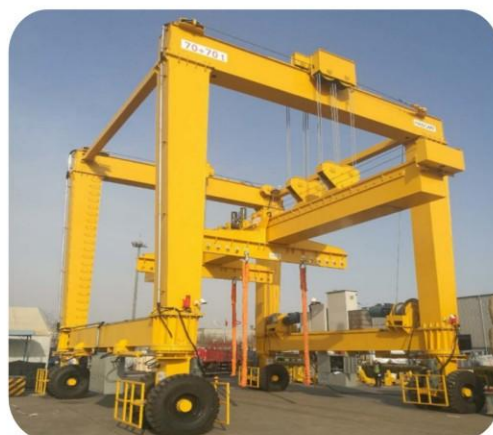
- Equipped with a diesel engine to provide power, using hydraulic drive.
- Multiple lifting point design, high synchronization, stability and reliability.
- It has various walking modes such as straight travel, oblique travel, and turning in place.
- Suitable for various road surfaces such as concrete and gravel roads, with a 4% climbing ability.
- The main beam and crossbeam are hinged to eliminate internal stress caused by uneven road surfaces.
- Wireless remote control.



Rubber tire gantry crane



Electric single girder type
Capacity: 2t~20t
Span: 10-20m
Lifting height: 3-12m



Electric double girder type
Capacity: 10t~200t
Span: 10-20m
Lifting height: 6-15m



Hydraulic single girder type
Capacity: 10t~100t
Span: 10-20m
Lifting height: 3-12m



Hydraulic double girder type
Capacity: 10t~200t
Span: 10-20m
Lifting height: 6-15m

Portal Crane

Portal cranes are widely used in ports, docks, yards, and other places to complete the loading, unloading, and transfer operations of ships and vehicles carrying goods. Its design, manufacturing, and inspection comply with advanced domestic and international standards such as DIN, FEM, IEC, AWS, GB, as well as the latest national standards issued.

Portal cranes are divided into two types based on the structural form of the boom: single boom and four link. The single arm gantry crane has a simple structure, large lifting capacity, and light self weight. The four link gantry crane adopts a combined boom system to achieve horizontal movement of goods during the luffing process, with the characteristics of small horizontal drop, stable luffing, and low power consumption. Both types of gantry cranes can meet the loading and unloading requirements of general cargo, bulk cargo, and containers, and have the characteristics of wide application range, high operating efficiency, and stable operation of the entire machine.



Single Jib Fixed Portal Crane
Capacity: 10t~40t
Working radius: 10~20m

Single Jib Traveling Portal Crane
Capacity: 10t~200t
Working radius: 20~40m

